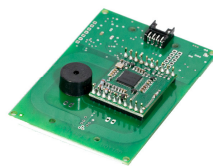


RFID Multiplex 125 kHz Systems



The Multiplex 125kHz systems are cost-effective reader devices available in different technologies.

The Multiplex 125kHz systems are designed as desktop versions or as PCB for integration in existing applications, and are available with following interfaces: **USB, TTL, RS232**

These can be in **keyboard emulation mode** (keyboard emulation, simple connection to the PC, no further drivers needed), **transparent mode** or as **COM port** with full access to the transponder.

Available in following technologies:

- EM4102
- Hitag1
- Hitag2

Following operating systems are supported by Com Port:

- Windows 98, 98SE, ME, 2000, Server 2003, XP und Server 2008
- Windows 7 32-bit, 64-bit
- Windows Vista und Vista 64-bit
- Windows XP Embedded
- Windows CE 4.2, 5.0 und 6.0
- Android via JAVA-driver
- Mac OS 8/9, OS-X
- Linux 2.4 and higher

Technical data:

- Dimensions: 80 x 56 x 10 mm
- Interfaces:
 - USB HID
 - USB COM Port
 - USB direct link via FTDI
 - Real RS232
 - Asynchron serial TTL
 - Real RS232 direct link
 - Asynchron serial TTL direct link
- Options:
 - customer specific connection via present soldering pads
 - customer specific front label
 - customer specific connection cable
- Power supply : 5V DC \pm 10%
- Status indications : 2 x LED's, 1 x buzzer
- Read range: up to 100 mm (depending on transponder type and environment)
- Temperature range: -25° to +80° C
- RoHs